



**BK10** SAFETY CHAIN SYSTEM

**SUITS** TRAILERS AND TOWBARS Max. ATM 10,000kg

**RATINGS & INFO**

- Suits chain size 10mm
- Max. ATM 10,000kg



- CRN 49479 (ADR62/02)

**BK10 WILL ACCEPT**

- 10mm ADR62 Short link chain
- 13mm ADR62 Short link chain
- AS4177-16 8mm chain
- AS4177-25 10mm chain
- AS4177-35 13mm chain
- 2.0t, 13mm Grade S Bow Shackle

**ASSEMBLY ITEMS**

**BK10-10T Towbar Set**

Mass 1.8kg

- 1** Safety chain attachment (weldable)
- 2** Pin assembly – Towbar set
- 3** Cable clip assembly

**BK10-10D Trailer Set**

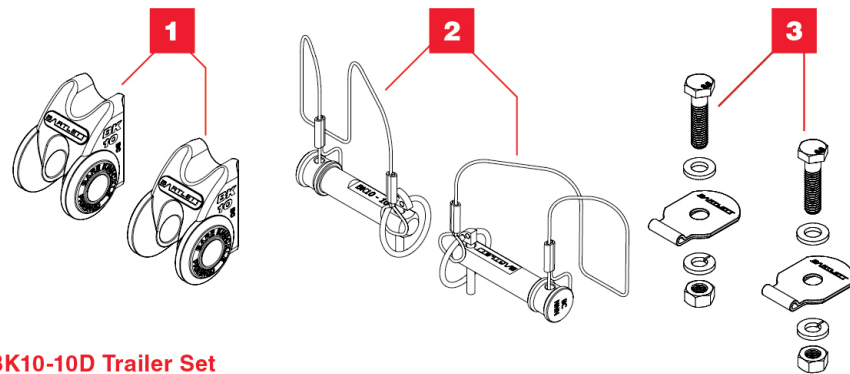
Mass 1.6kg

- 4** Safety chain attachment (weldable)
- 5** Pin assembly – Trailer set

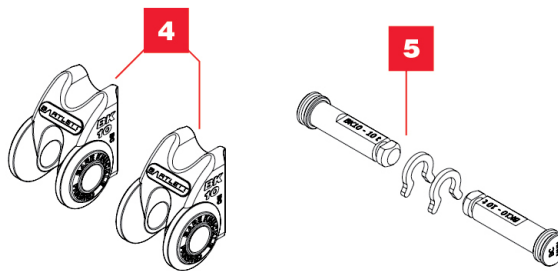


**Assemblies**

**BK10-10T Towbar Set**



**BK10-10D Trailer Set**



All drawings not to scale.

Aust. Pat. 2013204783, NZ Pat. 631763, Pending US Pat. App.15/533,346. Aust. Reg. Des. 365990 and 365989.



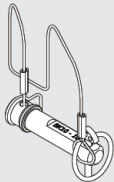
# BK10 SAFETY CHAIN SYSTEM

**SUITS TRAILERS AND TOWBARS** Max. ATM 10,000kg

## SPARE PARTS



**BK10-01**  
Safety chain attachment (weldable)  
Mass 0.49kg



**BK10-110**  
Pin assembly - Towbar  
Mass 0.13kg



**BTU-0637**  
BK Cable "P" Clip Assembly (pair)  
Mass 0.05kg

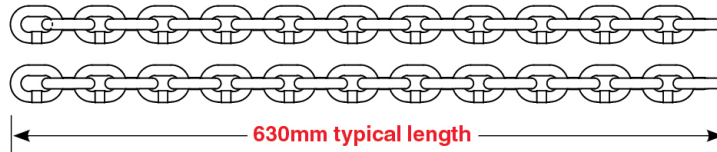


**BK10-210**  
Pin assembly - Trailer  
Mass 0.1kg

## CHAIN SET OPTIONS

### BK10-L22

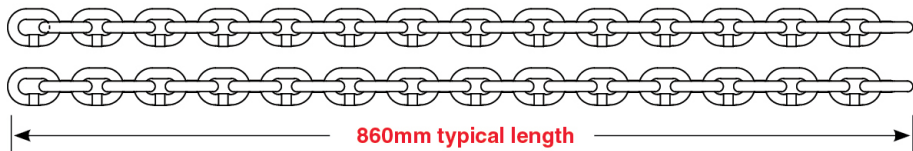
Safety chain set, 10mm, 22 links for BK10 safety chain system.  
Mass 3kg



### BK10-L28

### BK10-L28

Safety chain set, 10mm, 28 links for BK10 safety chain system.  
Mass 3.8kg



## COMPLETE KITS OPTIONS

### BK10-L22-K

Complete kit for BK10 safety chain system with 2 x 22 link chains.  
Mass 9.4kg

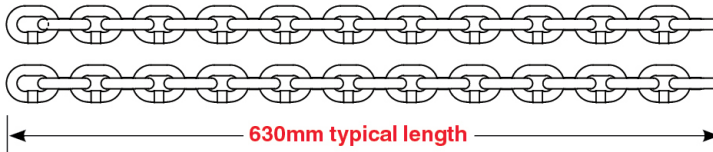
### BK10-L28-K

Complete kit for BK10 safety chain system with 2 x 28 link chains.  
Mass 11.3kg

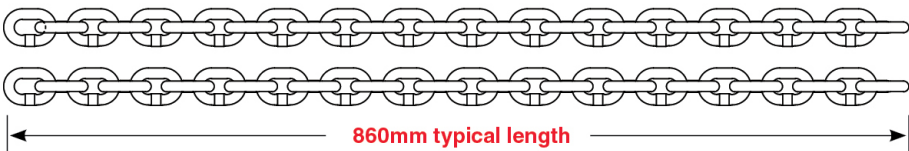


## Dimensions

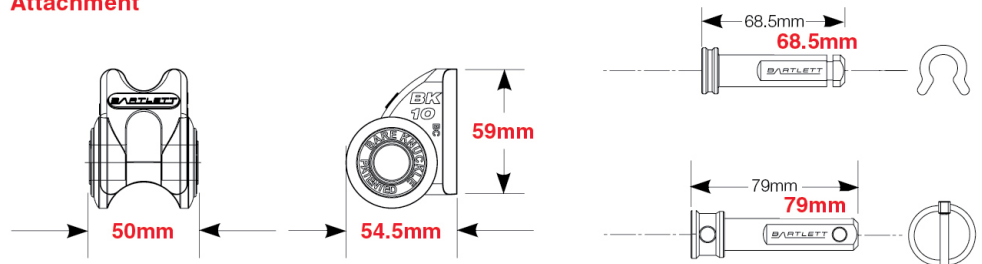
### BK10-L22



### BK10-L28



### Attachment



All drawings not to scale.