



BK20 SAFETY CHAIN SYSTEM

SUITS TRAILERS AND TOWBARS Max. ATM 50,000kg

RATINGS & INFO

- Suits chain size 20mm
- Max. ATM 50,000kg



- CRN 49,482 (ADR62/02)

BK20 WILL ACCEPT

- 20 mm ADR62 Short link chain

ASSEMBLY ITEMS

BK20-50T Towbar Set
Mass 4.4kg

- 1** Safety chain attachment (weldable)
- 2** Pin assembly – Towbar set
- 3** BK Cable “P” Clip Assembly

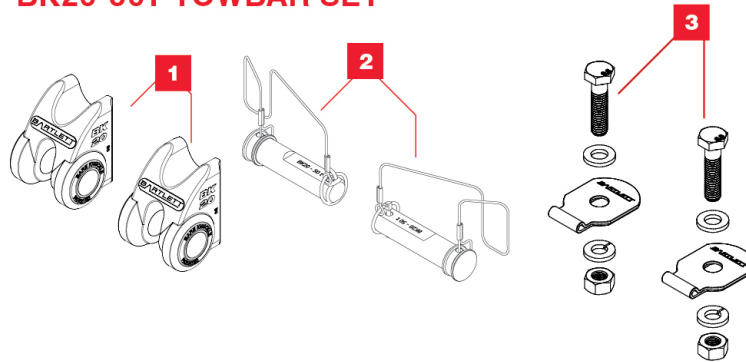
BK20-50D Trailer Set
Mass 4.2kg

- 4** Safety chain attachment (weldable)
- 5** Pin assembly – Trailer set

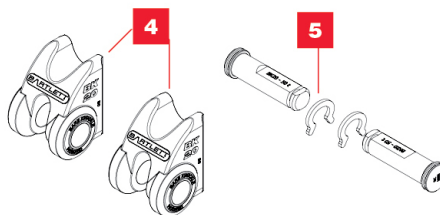


Assemblies

BK20-50T TOWBAR SET



BK20-50D TRAILER SET



All drawings not to scale.

Aust. Pat. 2013204783, NZ Pat. 631763, Pending US Pat. App.15/533,346. Aust. Reg. Des. 365990 and 365989.



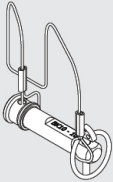
BK20 SAFETY CHAIN SYSTEM

SUITS TRAILERS AND TOWBARS Max. ATM 50,000kg

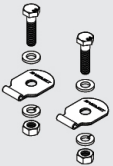
SPARE PARTS



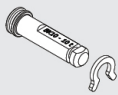
BK20-01
Safety chain attachment (weldable)
Mass 2.59kg



BK20-110
Pin assembly – Towbar
Mass 0.56kg



BTU-0637
BK Cable "P" Clip Assembly (pair)
Mass 0.05kg



BK20-210
Pin assembly – Trailer
Mass 0.48kg

CHAIN SET OPTIONS

BK20-L11-K

Safety chain set, 20 mm, 11 links for BK20 safety chain system.
Mass 11.6kg

BK20-L13-K

Safety chain set, 20 mm, 13 links for BK20 safety chain system.
Mass 13.7kg

COMPLETE KITS OPTIONS

BK20-TDL11

Complete kit for BK20 safety chain system with 2 x 11 link chains.
Mass 36.9kg

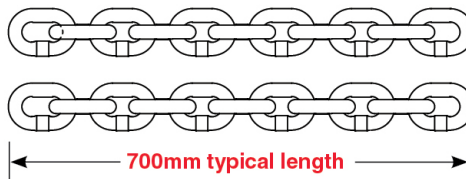
BK20-TDL13

Complete kit for BK20 safety chain system with 2 x 13 link chains.
Mass 39kg

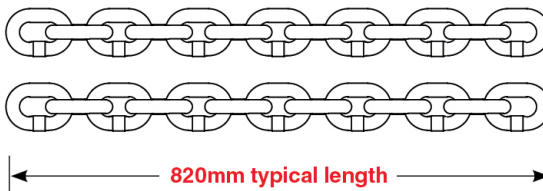


Dimensions

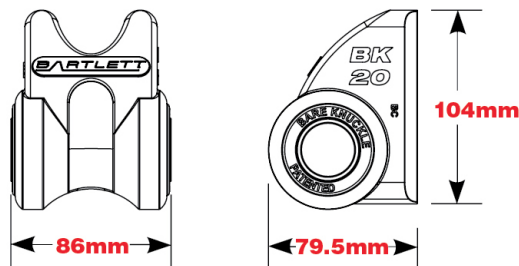
BK20-L11



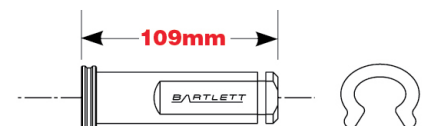
BK20-L13



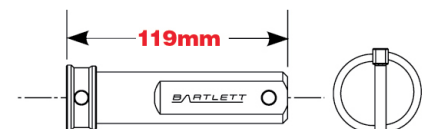
Attachment



Trailer Pin



Towbar Pin



All drawings not to scale.