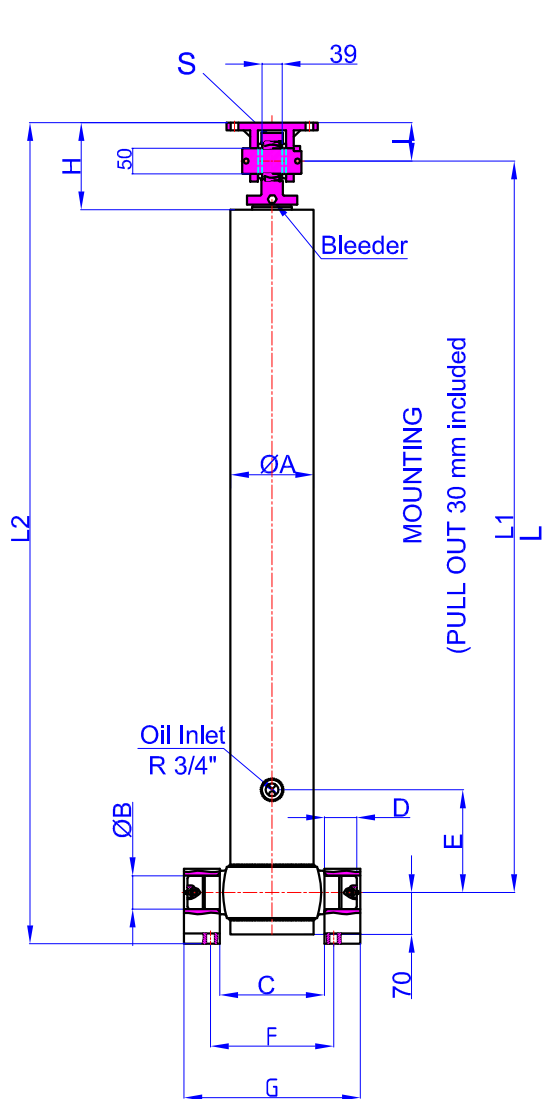
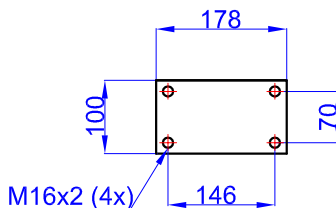


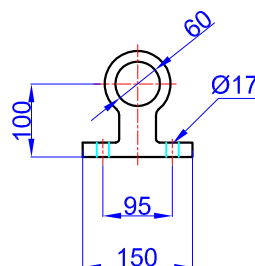
GHS 135 x 3 x 3195 C	Drawing No	:43135331953
	Reference No	:04-001



47000020-02-001
 (Bracket Kits Top Clevis
 GHTC GE 50x75)



47000057-0001
 (Bracket Kits T
 60-100-150-22)

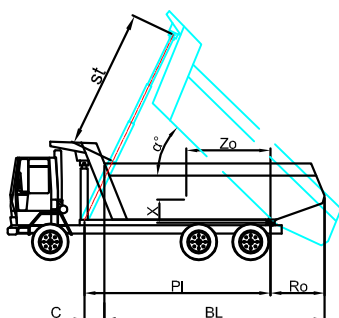


A	:	156	mm
B	:	60	mm
C	:	193	mm
D	:	60	mm
E	:	200	mm
F	:	240	mm
G	:	333	mm
H	:	170	mm
I	:	75	mm
L	:	1338	mm
*L1	:	1368	mm
L2	:	1513	mm
S	:	42	mm

* Inc 30 mm pull out :
 tolerance +20 -0

Hard Chromed all stages
 Working Pressure : 135 Bar
 Max. Working Pressure : 150- Bar
 All Cylinder Materials are St 52 Cold Drawn Tubes
 Tipping Weight = Weight Body + Payload

STAGE	1	2	3	4	5	6	7	8	TOTAL
EFFECTIVE DIAMETER (mm)	Ø135	Ø116	Ø98						
STROKE	1065	1065	1065						3195
OIL DISPLACEMENT (L)	16,5	12	9						44,5
135 BAR (TONS)									24



BL (body length)
 Ro (rear overhang)
 Ycog (vert. pos.
 centre of gravity)
 PI(Pivot length)
 $\alpha^\circ = \text{st} \times 60$
 PI

BL	4000			3900			3800		
Ro	200	400	600	200	400	600	200	400	600
α°	45	48	51	47	49	53	48	51	54
Ycog									
400	21	24	27	21	24	28	22	25	30
700	24	28	33	25	29	36	25	30	38
1000	28	33	42	29	35	42	30	38	44
st	3000	3040	3060	3055	3021	3091	3040	3060	3060