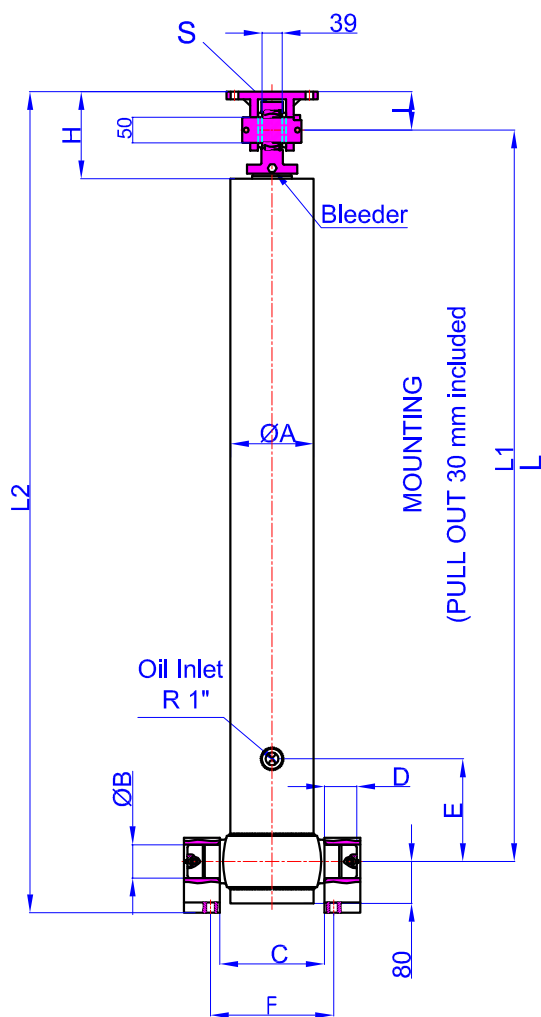
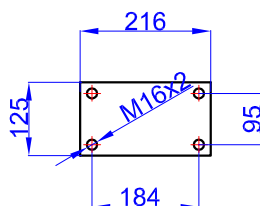


GHS 154,5 x 4 x 4260 C

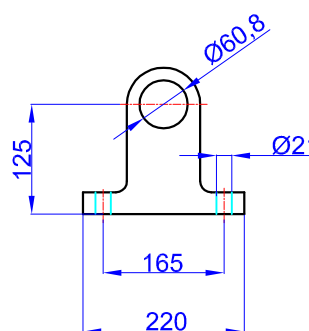
Drawing No :43154442603
Reference No :04-001



GHTC 50-85
47000026-02-002



BRACKET KIDS
GHCB 60-125-220-44
47000058-0001



- A : 175 mm
- B : 60 mm
- C : 215 mm
- D : 60 mm
- E : 200 mm
- F : 305 mm
- G : 355 mm
- H : 180 mm
- I : 85 mm
- L : 1330 mm
- *L1 : 1360 mm
- L2 : 1540 mm
- S : 42 mm

* Inc 30 mm pull out :
tolerance +20 -0

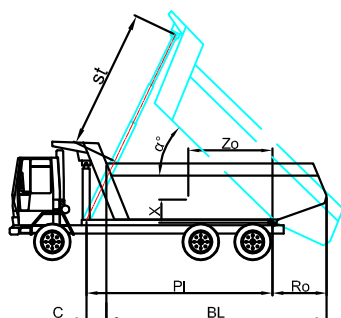
Hard Chromed all stages

Working Pressure : 135 Bar

Max. Working Pressure : 150- Bar

All Cylinder Materials are St 52 Cold Drawn Tubes

Tipping Weight = Weight Body + Payload



STAGE	1	2	3	4	5	6	7	8	TOTAL
EFFECTIVE DIAMETER (mm)	Ø154,5	Ø135	Ø116	Ø98					
STROKE	1065	1065	1065	1065					4260
OIL DISPLACEMENT (L)	21	16	12	9					65
THRUST AT 135 BAR (TONS)									31

BL (body length)
 Ro (rear overhang)
 Ycog (vert. pos. centre of gravity)
 PI(Pivot length)
 $\alpha^\circ = \text{st} \times 60 / \text{PI}$

	5400			5200			5000		
BL	200	500	800	200	500	800	200	500	800
Ro	45	48	52	47	51	54	49	53	57
α°									
Ycog									
600	35	40	49	37	42	52	38	45	57
900	39	47	59	41	50	65	44	54	70
1200	44	55	69	47	60	74	51	63	79
st	4050	4080	4160	4073	4165	4140	4083	4151	4180