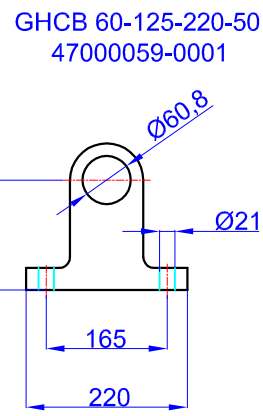
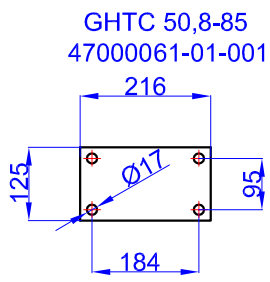
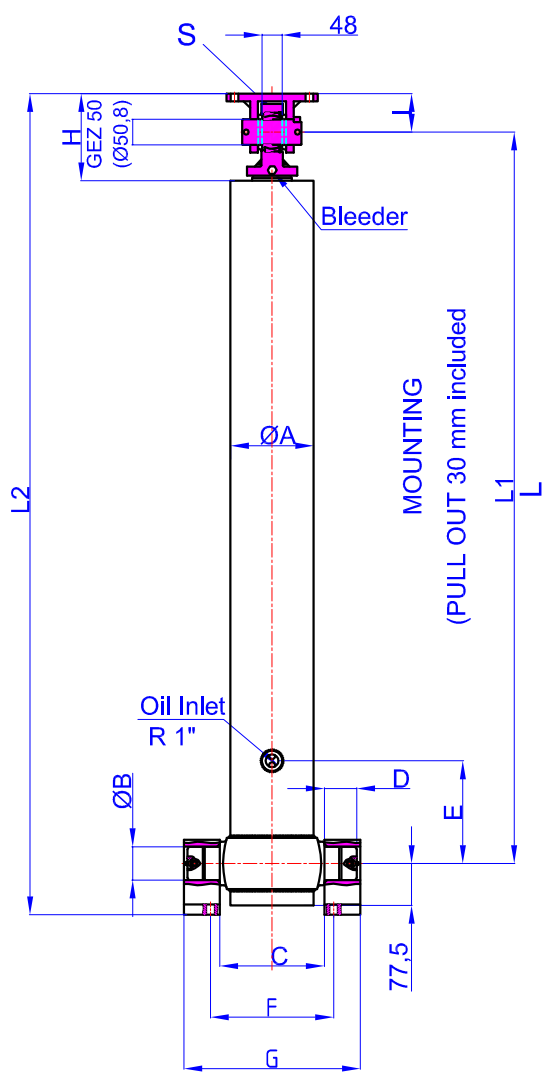


GHS 175 x 5 x 6200 C	Drawing No	:43175562003
	Reference No	:02-001

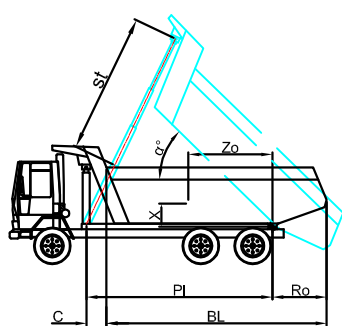


A	: 197	mm
B	: 60	mm
C	: 240	mm
D	: 60	mm
E	: 200	mm
F	: 343	mm
G	: 400	mm
H	: 180	mm
I	: 85	mm
L	: 1530	mm
*L1	: 1560	mm
L2	: 1740	mm
S	: 52	mm

* Inc 30 mm pull out : tolerance +20 -0

Hard Chromed all stages
 Working Pressure : 135 Bar
 Max. Working Pressure : 150- Bar
 All Cylinder Materials are St 52 Cold Drawn Tubes
 Tipping Weight = Weight Body + Payload

STAGE	1	2	3	4	5	6	7	8	TOTAL
EFFECTIVE DIAMETER (mm)	Ø175	Ø154,5	Ø135	Ø116	Ø98				
STROKE	1240	1240	1240	1240	1240				6200
OIL DISPLACEMENT (L)	31,5	25	19	14	10,5				108,5
135 BAR (TONS)									45



BL (body length)	8000			7800			7600		
Ro (rear overhang)	200	500	800	200	500	800	200	500	800
Yo (vert. pos. centre of gravity)	45	47	49	46	48	50	47	49	52
PI (Pivot length)	6000	6031	6043	5980	6000	6000	5953	5961	6066

$\alpha = \text{st} \times 60 / \text{PI}$