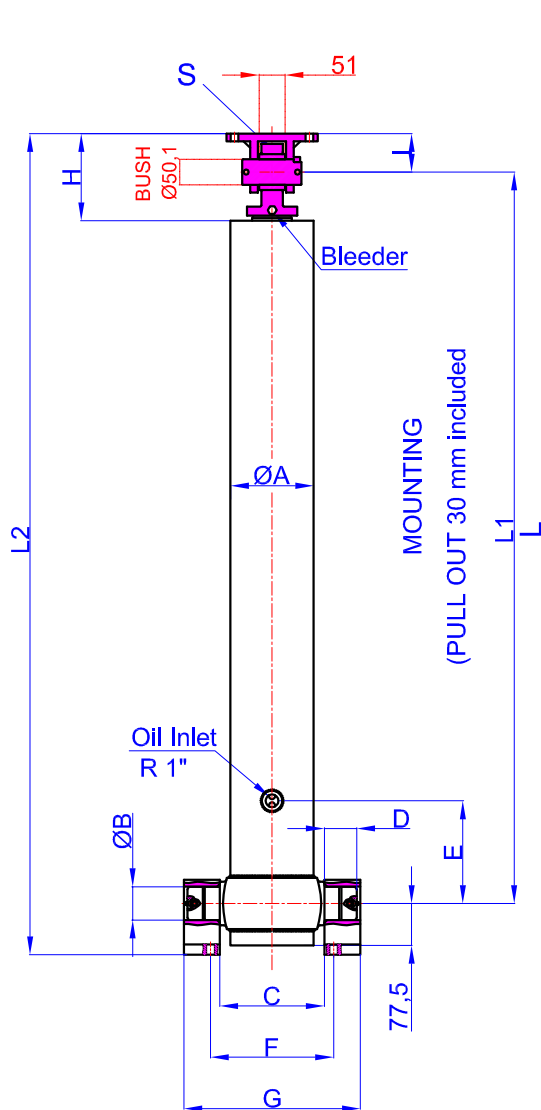
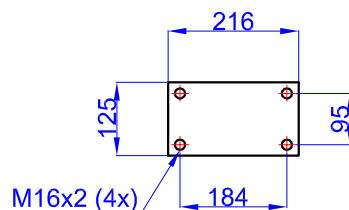


GHS 175 x 5 x 7325 C

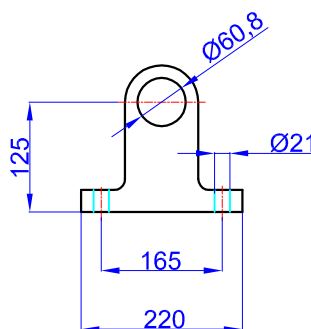
Product Code :43175573253
Reference No :07-001



47000026-02-003
 (Bracket Kits Top Clevis
 GHTC GE 50x85)



47000059-0001
 (Bracket Kits T
 60-125-220-50)

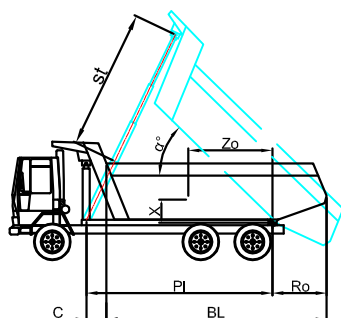


- A : 197 mm
- B : 60 mm
- C : 240 mm
- D : 60 mm
- E : 200 mm
- F : 343 mm
- G : 400 mm
- H : 180 mm
- I : 85 mm
- L : 1780 mm
- *L1 : 1810 mm
- L2 : 1990 mm
- S : 42 mm

* Inc 30 mm pull out :
 tolerance +20 -0

Hard Chromed all stages
 Working Pressure : 135 Bar
 Max. Working Pressure : 150 Bar
 All Cylinder Materials are St 52 Cold Drawn Tubes
 Tipping Weight = Weight Body + Payload

STAGE	1	2	3	4	5	6	7	8	TOTAL
EFFECTIVE DIAMETER (mm)	Ø175	Ø154,5	Ø135	Ø116	Ø98				
STROKE	1465	1465	1465	1465	1465				7325
OIL DISPLACEMENT (L)	38	30	23	17	12				129
135 BAR (TONS)									45



BL (body length)
 Ro (rear overhang)
 Ycog (vert. pos.
 centre of gravity)
 PI (Pivot length)
 $\alpha^\circ = \frac{st \times 60}{PI}$