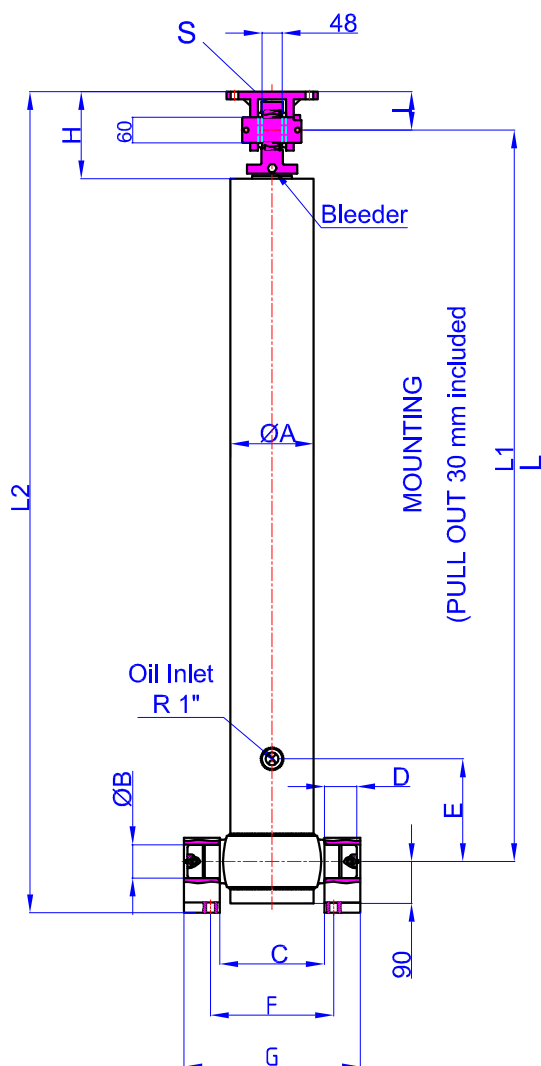
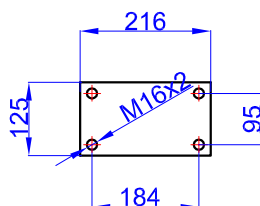


GHS 197 x 5 x 7325 C

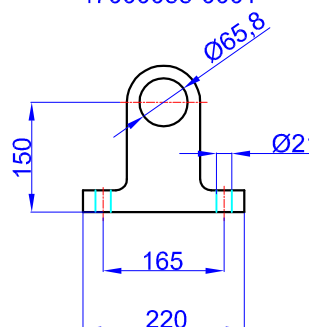
Product Code :43197573253
Reference No :04-001



GHTC 60-90
47000035-02-001



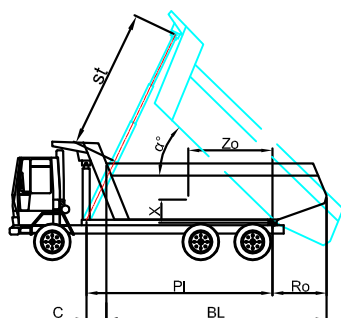
BRACKET KITS
65-150-220-38
47000055-0001



- A : 220 mm
- B : 65 mm
- C : 265 mm
- D : 60 mm
- E : 200 mm
- F : 343 mm
- G : 425 mm
- H : 185 mm
- I : 90 mm
- L : 1770 mm
- *L1 : 1800 mm
- L2 : 2105 mm
- S : 52 mm

* Inc 30 mm pull out :
tolerance +20 -0

Hard Chromed all stages
 Working Pressure : 135 Bar
 Max. Working Pressure : 150- Bar
 All Cylinder Materials are St 52 Cold Drawn Tubes
 Tipping Weight = Weight Body + Payload



STAGE	1	2	3	4	5	6	7	8	TOTAL
EFFECTIVE DIAMETER (mm)	Ø197	Ø175	Ø154,5	Ø135	Ø116				
STROKE	1465	1465	1465	1465	1465				7325
OIL DISPLACEMENT (L)	47	37	29,5	22,5	17				167,5
THRUST AT 135 BAR (TONS)									60

BL (body length)
 Ro (rear overhang)
 Ycog (vert. pos. centre of gravity)
 PI(Pivot length)
 $\alpha^\circ = \text{st} \times 60$
 PI

BL	9400			9200			9000		
Ro	200	500	800	200	500	800	200	500	800
α°	45	46	48	46	47	49	47	49	50
Ycog									
600	48	51	56	49	52	57	50	54	58
900	51	55	60	52	56	61	53	58	63
1200	54	59	65	56	61	67	57	62	70
st	7050	6976	7040	7053	6971	7023	7050	7105	7000