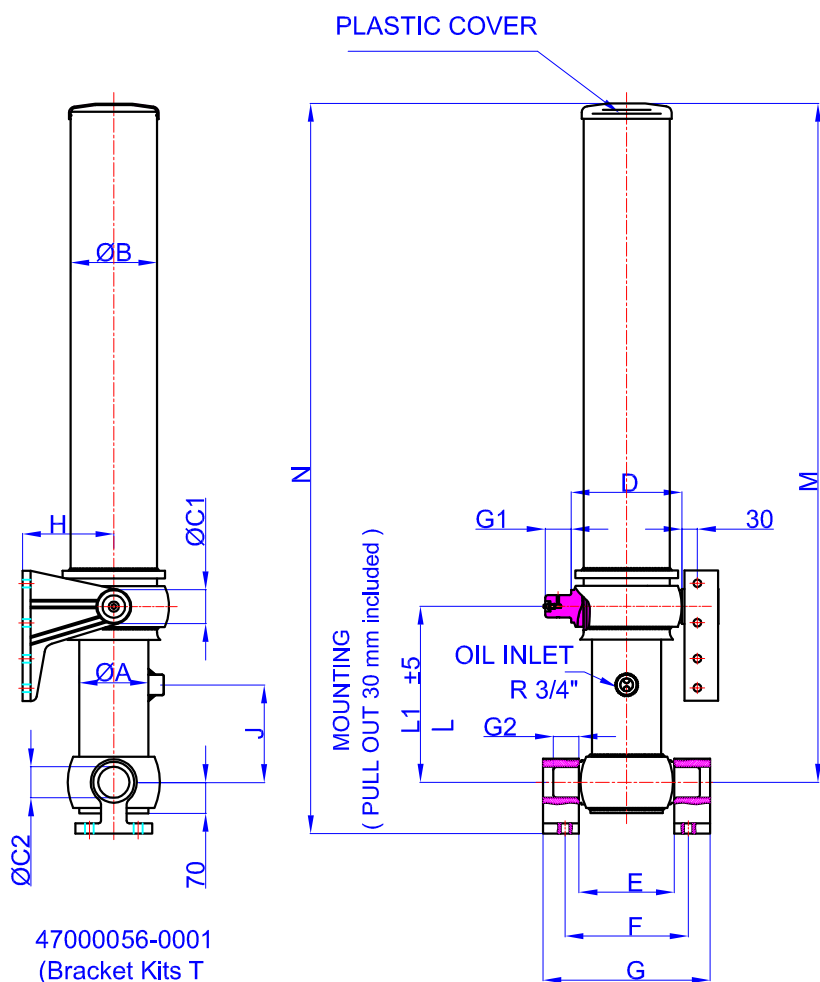


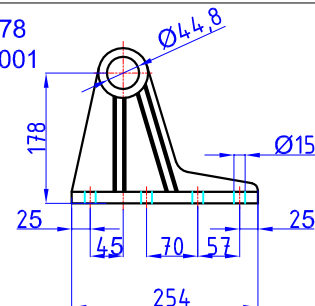
GHS 116 x 3 x 4125 H

Stock Code :43116341256

Reference No :04-001

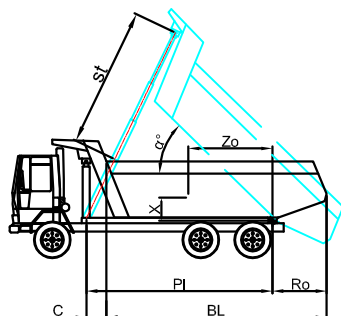
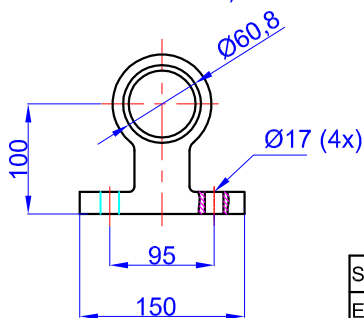


GHLB 44-178
47000004-0001



- A : 136 mm
- B : 168 mm
- C1 : 44 mm
- C2 : 60 mm
- D : 216 mm
- E : 170 mm
- F : 240 mm
- G : 315 mm
- G1 : 70 mm
- G2 : 60 mm
- H : 178 mm
- J : 190 mm
- M : 1663 mm
- N : 1763 mm
- L : 343 mm
- *L1 : 373 mm

47000056-0001
(Bracket Kits T
60-100-150-34)



* Brackets are Optional
 Hard Chromed all stages
 Working Pressure : 135 Bar 135MPa
 Max. Working Pressure : 180 Bar 180 MPa
 All Cylinder Materials are St 52 Cold Drawn Tubes
 Tipping Weight = Weight Body + Payload

STAGE	1	2	3	4	5	6	7	8	TOTAL
EFFECTIVE DIAMETER (mm)	Ø116	Ø98	Ø80						
STROKE	1375	1375	1375						4125
OIL DISPLACEMENT (L)	15,5	11,5	7,5						39,5
135 BAR (TONS)									18

BL (body length)	5200		5100		5000	
Ro (rear overhang)	200	400	600	200	400	600
α°	45	47	49	46	48	50
Ycog (vert. pos. centre of gravity)	26	28	30	26	28	31
PI(Pivot length)	28	31	34	28	31	35
α° = st x 60 / PI	1000	31	34	39	32	35
	2300	2333	2340	2320	2340	2333
	2333	2340	2340	2333	2340	2360

Weight : -- Kg