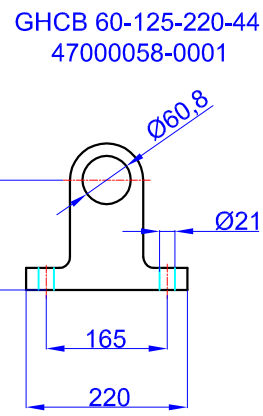
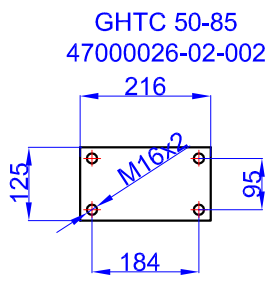
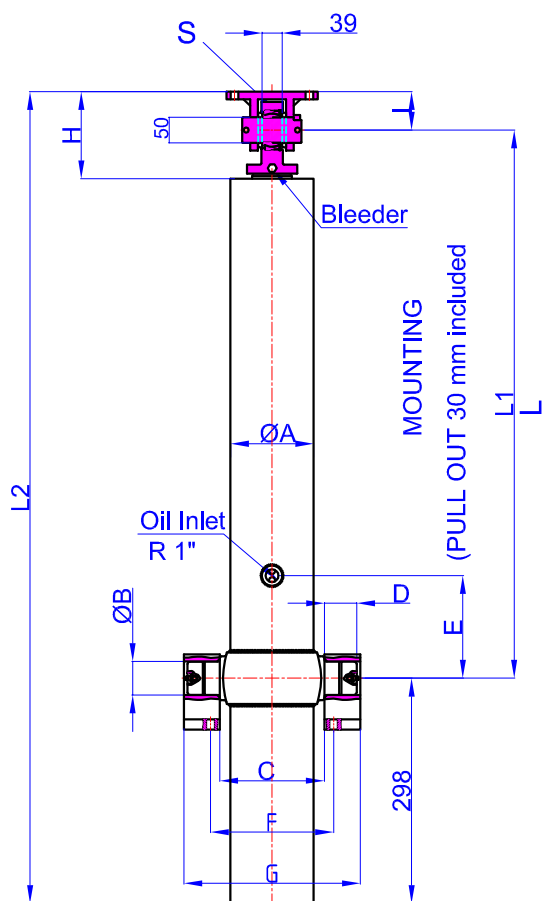


<b>GHS 154,5 x 4 x 4600 C RT</b>	<b>Product Code</b>	<b>:43154446003</b>
	<b>Reference No</b>	<b>:05-001</b>

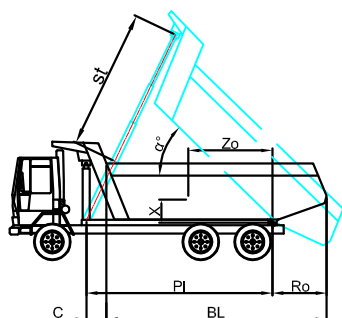


A	:	175	mm
B	:	60	mm
C	:	215	mm
D	:	60	mm
E	:	200	mm
F	:	305	mm
G	:	375	mm
H	:	180	mm
I	:	85	mm
L	:	1210	mm
*L1	:	1240	mm
L2	:	1593	mm
S	:	42	mm

\* Inc 30 mm pull out :  
tolerance +20 -0

Hard Chromed all stages  
 Working Pressure : 170 Bar  
 Max. Working Pressure : 190- Bar  
 All Cylinder Materials are St 52 Cold Drawn Tubes  
 Tipping Weight = Weight Body + Payload

STAGE	1	2	3	4	5	6	7	8	TOTAL
EFFECTIVE DIAMETER (mm)	Ø154,5	Ø135	Ø116	Ø98					
STROKE	1150	1150	1150	1150					4600
OIL DISPLACEMENT (L)	23	17,5	13	9,5					71
135 BAR (TONS)									31



BL (body length)	5800			5600			5400		
Ro (rear overhang)	200	500	800	200	500	800	200	500	800
α°	46	48	51	47	50	54	49	53	56
Ycog (vert. pos. centre of gravity)									
PI (Pivot length)	35	39	46	36	41	49	37	43	53
α° = st x 60 / PI	900	38	45	54	40	48	60	42	51
	1200	43	51	65	45	56	69	48	60
st	4446	4400	4420	4386	4416	4500	4410	4505	4480