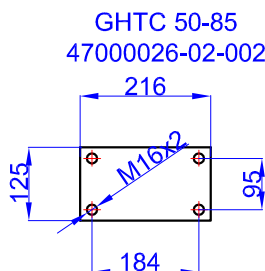
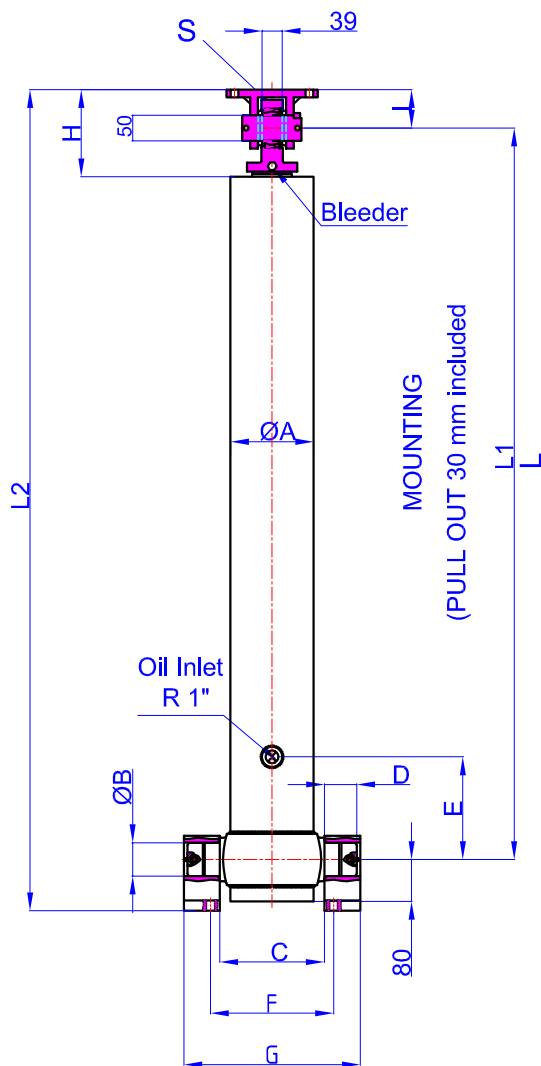
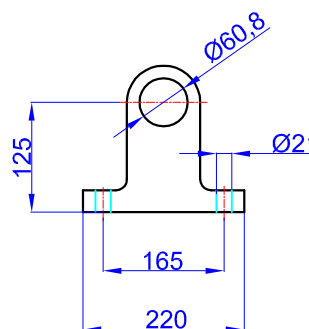


GHS 154,5 x 4 x 5140 C

Drawing No :43154451403
Reference No :04-001



BRACKET KIDS
GHCB 60-125-220-44
47000058-0001

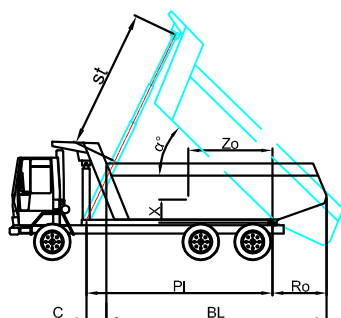


- A : 175 mm
- B : 60 mm
- C : 215 mm
- D : 60 mm
- E : 200 mm
- F : 305 mm
- G : 375 mm
- H : 180 mm
- I : 85 mm
- L : 1577 mm
- *L1 : 1607 mm
- L2 : 1787 mm
- S : 42 mm

* Inc 30 mm pull out :
tolerance +20 -0

Hard Chromed all stages
 Working Pressure : 135 Bar
 Max. Working Pressure : 150- Bar
 All Cylinder Materials are St 52 Cold Drawn Tubes
 Tipping Weight = Weight Body + Payload

STAGE	1	2	3	4	5	6	7	8	TOTAL
EFFECTIVE DIAMETER (mm)	Ø154,5	Ø135	Ø116	Ø98					
STROKE	1285	1285	1285	1285					5140
OIL DISPLACEMENT (L)	25,5	19,5	14,5	10,5					78,5
135 BAR (TONS)									31



BL (body length)
 Ro (rear overhang)
 Ycog (vert. pos. centre of gravity)
 PI(Pivot length)
 $\alpha^\circ = \frac{st \times 60}{PI}$

	6600			6400			6200		
BL	200	500	800	200	500	800	200	500	800
Ro	45	47	50	46	49	52	48	51	54
Ycog									
600	33	37	42	34	38	43	35	39	46
900	36	40	47	37	42	50	39	44	53
1200	39	45	54	41	48	59	43	51	63
st	4950	4935	5000	4906	4981	5026	4960	5015	5040