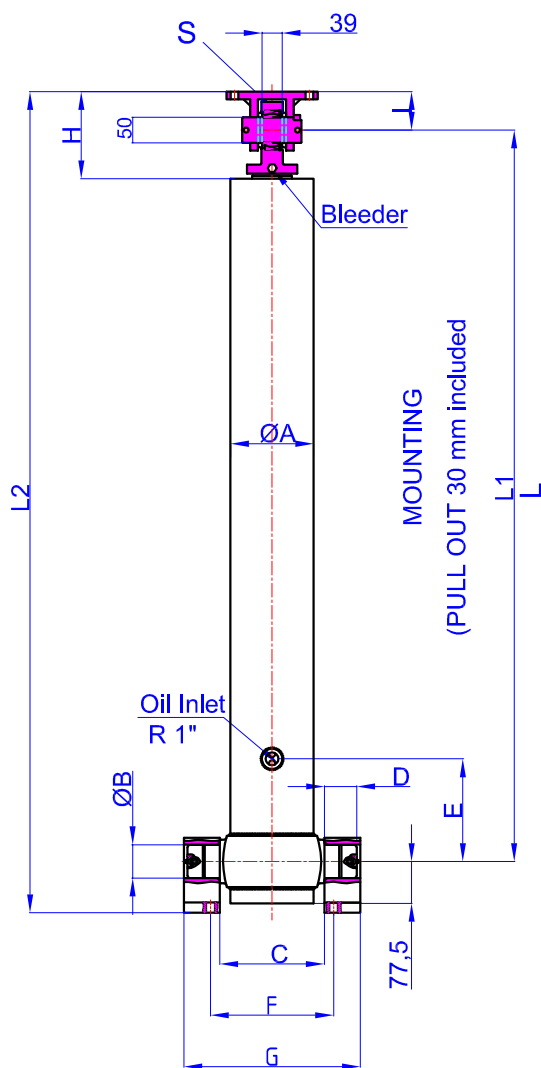
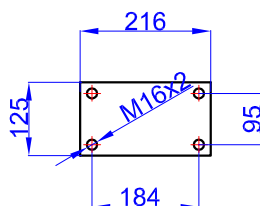


**GHS 175 x 4 x 6040 C**

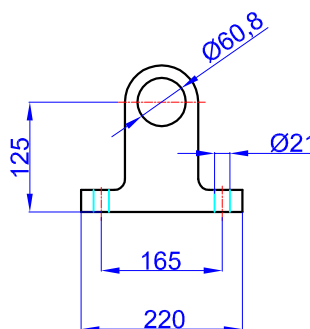
**Drawing No :43175460403**  
**Reference No : 04-001**



GHTC 50-85  
47000026-02-002



BRACKET KIDS  
60-125-220-50  
47000059-0001



A	: 197	mm
B	: 60	mm
C	: 240	mm
D	: 60	mm
E	: 200	mm
F	: 343	mm
G	: 380	mm
H	: 180	mm
I	: 85	mm
L	: 1830	mm
*L1	: 1860	mm
L2	: 2040	mm
S	: 42	mm

\* Inc 30 mm pull out :  
tolerance +20 -0

Hard Chromed all stages

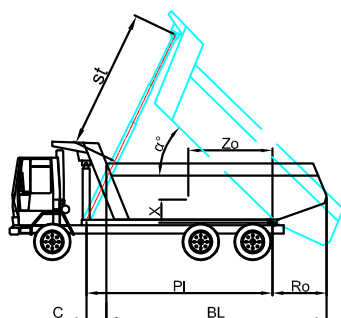
Working Pressure : 135 Bar

Max. Working Pressure : 150- Bar

All Cylinder Materials are St 52 Cold Drawn Tubes

Tipping Weight = Weight Body + Payload

STAGE	1	2	3	4	5	6	7	8	TOTAL
EFFECTIVE DIAMETER (mm)	Ø175	Ø154,5	Ø135	Ø116					
STROKE	1510	1510	1510	1510					6040
OIL DISPLACEMENT (L)	38,5	30,5	23	17,5					124,5
THRUST AT 135 BAR (TONS)									45



BL (body length)

Ro (rear overhang)

Ycog (vert. pos. centre of gravity)

PI(Pivot length)

$\alpha^\circ = \text{st} \times 60$

PI

BL	7700			7500			7300		
Ro	200	500	800	200	500	800	200	500	800
$\alpha^\circ$	45	47	49	46	48	50	47	50	52
Ycog									
600	49	53	58	54	39	60	50	55	61
900	52	57	63	59	44	66	55	61	69
1200	56	62	70	64	49	74	59	67	78
st	5775	5796	5798	5750	5760	5750	5718	5833	5806