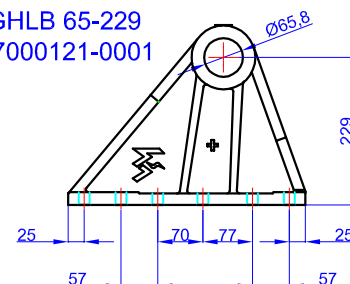


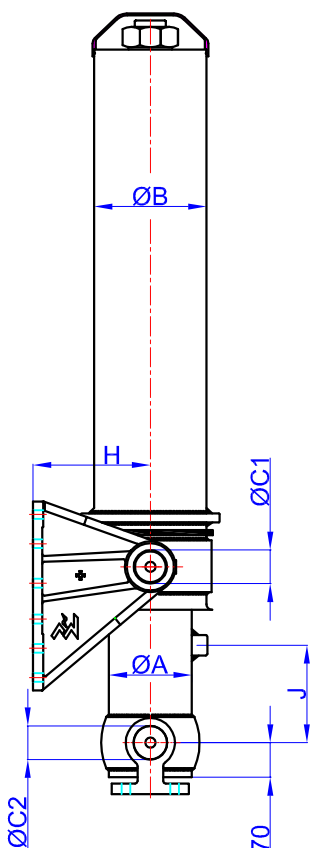
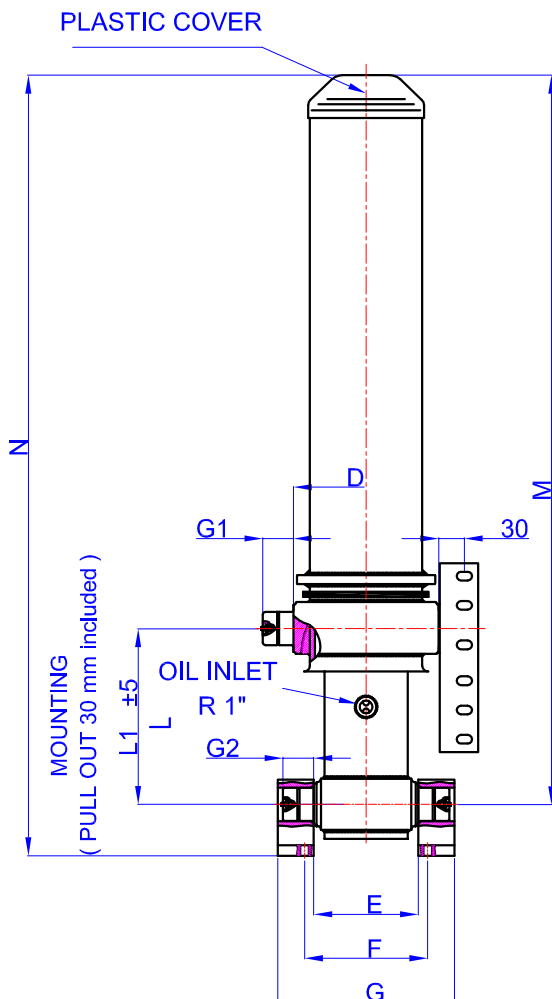
GHS 175 x 4 x 6040 H

Drawing No :43175460406
 Reference No :04-001

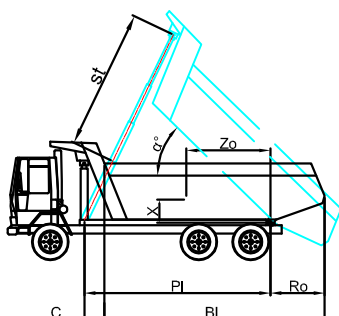
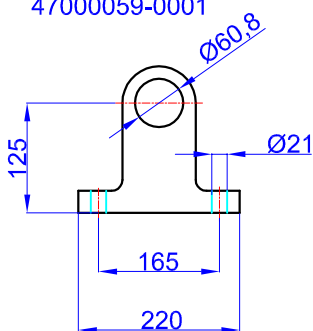
GHLB 65-229
 47000121-0001



- A : 197 mm
- B : 242 mm
- C1 : 65 mm
- C2 : 60 mm
- D : 340 mm
- E : 240 mm
- F : 343 mm
- G : 400 mm
- G1 : 60 mm
- G2 : 60 mm
- H : 229 mm
- J : 190 mm
- M : 1875 mm
- N : 2000 mm
- L : 343 mm
- *L1 : 373 mm



GHCB 60-125-220-50
 47000059-0001



* Brackets are Optional
 Hard Chromed all stages
 Working Pressure : 135 Bar 135MPa
 Max. Working Pressure : 180 Bar 180 MPa
 All Cylinder Materials are St 52 Cold Drawn Tubes
 Tipping Weight = Weight Body + Payload

STAGE	1	2	3	4	5	6	7	8	TOTAL
EFFECTIVE DIAMETER (mm)	Ø175	Ø154,5	Ø135	Ø116					
STROKE	1510	1510	1510	1510					6040
OIL DISPLACEMENT (L)	38	30	23	17					120,5
135 BAR (TONS)									45 T

BL (body length)	6000		5900		5800	
Ro (rear overhang)	200	400	200	400	200	400
Ycog (vert. pos. centre of gravity)	45	47	46	48	47	49
PI (Pivot length)	28	30	28	31	28	31
$\alpha^\circ = \text{st} \times 60$	31	33	31	34	32	35
PI	34	38	35	39	35	40
Weight	4500	4543	4523	4560	4543	4573

Weight : 357 Kg