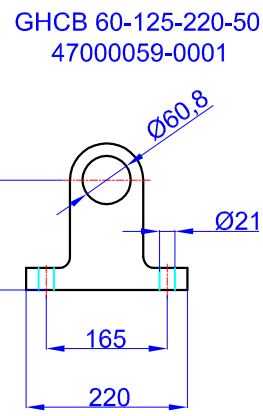
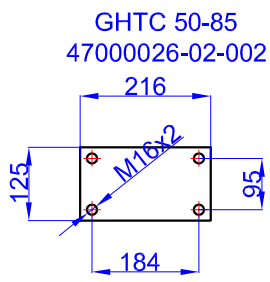
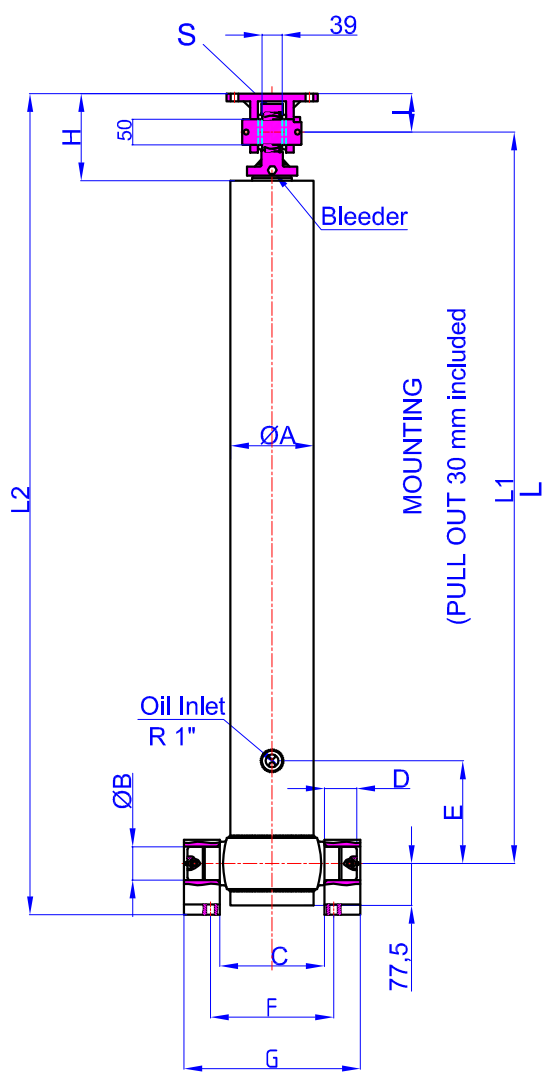


|                             |                     |                     |
|-----------------------------|---------------------|---------------------|
| <b>GHS 175 x 4 x 6220 C</b> | <b>Drawing No</b>   | <b>:43175462203</b> |
|                             | <b>Reference No</b> | <b>:04-001</b>      |

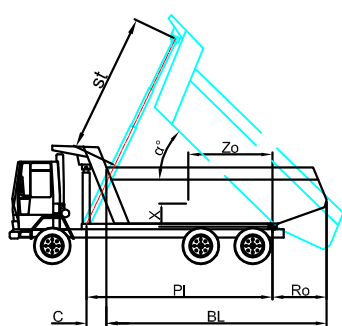


- A : 197 mm
- B : 60 mm
- C : 240 mm
- D : 60 mm
- E : 200 mm
- F : 343 mm
- G : 400 mm
- H : 180 mm
- I : 85 mm
- L : 1880 mm
- \*L1 : 1910 mm
- L2 : 2090 mm
- S : 42 mm

\* Inc 30 mm pull out : tolerance +20 -0

Hard Chromed all stages  
 Working Pressure : 135 Bar  
 Max. Working Pressure : 150- Bar  
 All Cylinder Materials are St 52 Cold Drawn Tubes  
 Tipping Weight = Weight Body + Payload

| STAGE                   | 1    | 2      | 3    | 4    | 5 | 6 | 7 | 8 | TOTAL |
|-------------------------|------|--------|------|------|---|---|---|---|-------|
| EFFECTIVE DIAMETER (mm) | Ø175 | Ø154,5 | Ø135 | Ø116 |   |   |   |   |       |
| STROKE                  | 1555 | 1555   | 1555 | 1555 |   |   |   |   | 6220  |
| OIL DISPLACEMENT (L)    | 39,5 | 31     | 24   | 18   |   |   |   |   | 127,5 |
| 135 BAR (TONS)          |      |        |      |      |   |   |   |   | 45    |



| BL (body length)                    | 7900 |      |      | 7700 |      |      | 7500 |      |      |
|-------------------------------------|------|------|------|------|------|------|------|------|------|
| Ro (rear overhang)                  | 200  | 500  | 800  | 200  | 500  | 800  | 200  | 500  | 800  |
| α°                                  | 45   | 47   | 49   | 46   | 48   | 51   | 48   | 50   | 52   |
| Ycog (vert. pos. centre of gravity) | 49   | 52   | 58   | 49   | 54   | 59   | 50   | 55   | 61   |
| PI(Pivot length)                    | 900  | 52   | 57   | 62   | 53   | 58   | 65   | 54   | 60   |
| α° = st x 60 / PI                   | 1200 | 56   | 61   | 69   | 57   | 63   | 72   | 59   | 66   |
| st                                  | 5925 | 5953 | 5961 | 5903 | 5920 | 6035 | 6000 | 6000 | 5980 |