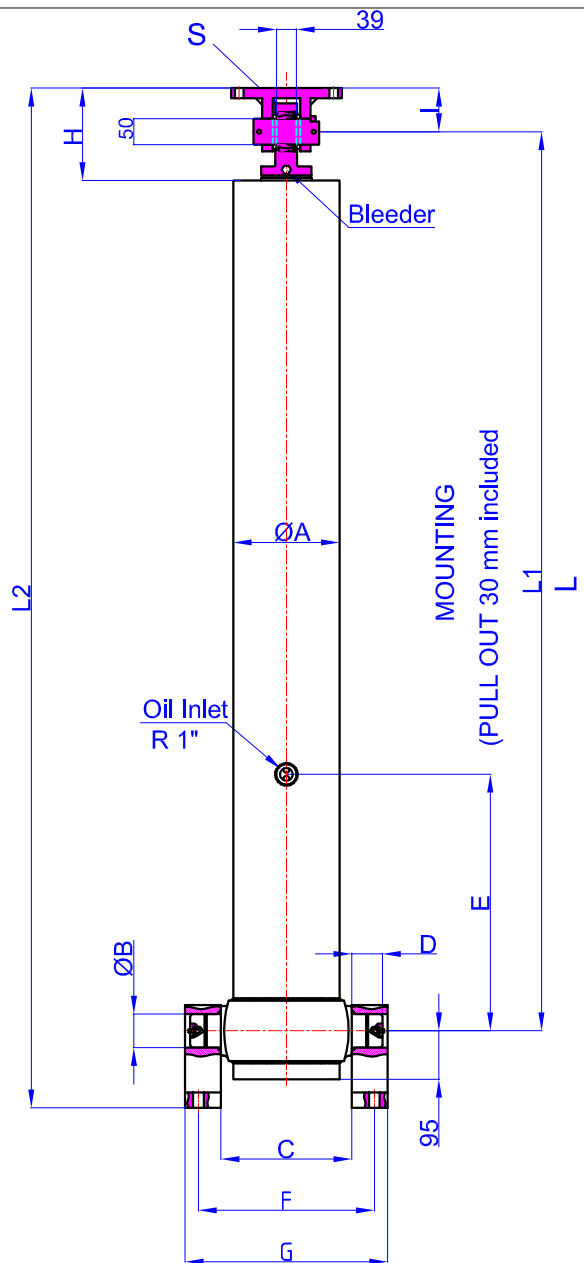


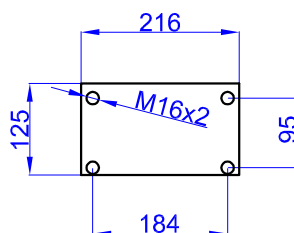
GHS 183 x 4 x 6280 C

Drawing No :40150112

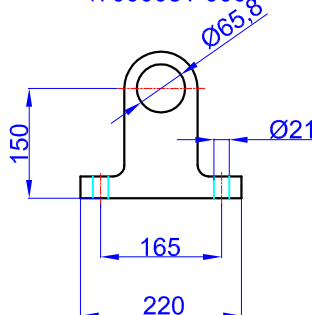
Reference No :04-001



GHTC 50-85
47000026-02-002



GHCB 65-150 220-44
47000031-0001



A	:	207	mm
B	:	65	mm
C	:	255	mm
D	:	60	mm
E	:	500	mm
F	:	343	mm
G	:	395	mm
H	:	180	mm
I	:	85	mm
L	:	1892	mm
*L1	:	1922	mm
L2	:	2130	mm
S	:	42	mm

* Inc 30 mm pull out :
tolerance +20 -0

Hard Chromed all stages

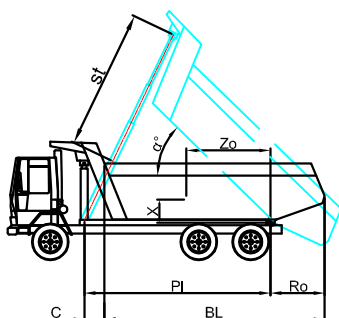
Working Pressure : 135 Bar

Max. Working Pressure : --- Bar

All Cylinder Materials are St 52 Cold Drawn Tubes

Tipping Weight = Weight Body + Payload

STAGE	1	2	3	4	5	6	7	8	TOTAL
EFFECTIVE DIAMETER (mm)	Ø183	Ø162	Ø140,5	Ø119,5					
STROKE	1570	1570	1570	1570					6280
OIL DISPLACEMENT (L)	44	35	26,5	19,5					125
THRUST AT 135 BAR (TONS)	35,5	28	21	15					



BL (body length)

Ro (rear overhang)

Yo (vert. pos. centre of gravity)

PI (Pivot length)

$$\alpha = \arcsin \left(\frac{Yo}{PI} \right)$$

	8000			7800			7600		
BL	200	500	800	200	500	800	200	500	800
Ro	45	47	50	47	49	51	48	50	53
Yo	41	44	48	42	46	50	43	46	51
600	44	48	53	45	49	55	46	51	57
900	47	52	58	48	54	61	50	56	64
1200	6000	6031	6166	6110	6125	6120	6080	6083	6183